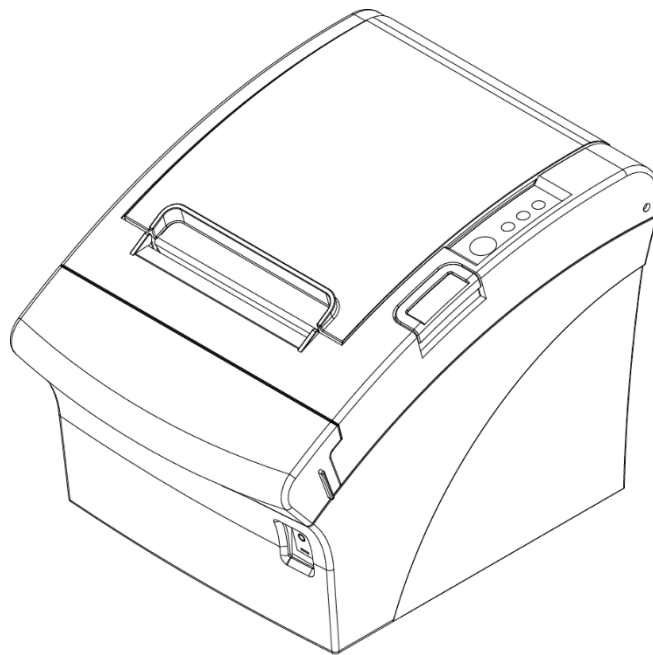


BIXOLON

Software Manual

POS MAC CUPS Driver Installation Guide

Ver. 1.03



<http://www.bixolon.co.kr>

Table of Contents

Copyright	3
1. Installation Guide.....	4
2. Print Options Setting Guide.....	10
3. Default Print Options Setting Guide.....	14
4. Uninstallation Guide	17

Copyright

© BIXOLON Co., Ltd. All rights reserved.

This user manual and all property of the product are protected under copyright law. It is strictly prohibited to copy, store, and transmit the whole or any part of the manual and any property of the product without the prior written approval of BIXOLON Co., Ltd.

The information contained herein is designed only for use with this BIXOLON product. BIXOLON is not responsible for any direct or indirect damages, arising from or related to use of this information.

- The BIXOLON logo is the registered trademark of BIXOLON Co., Ltd.
- All other brand or product names are trademarks of their respective companies or organizations.

BIXOLON Co., Ltd. maintains ongoing efforts to enhance and upgrade the functions and quality of all our products.

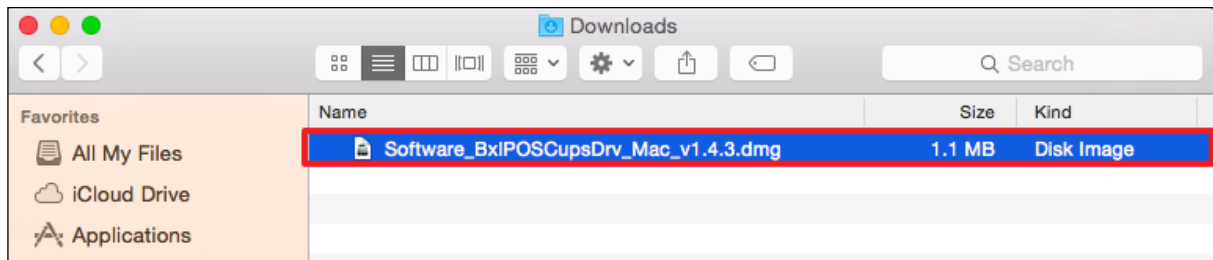
In the following, product specifications and/or user manual content may be changed without prior notice.

Caution

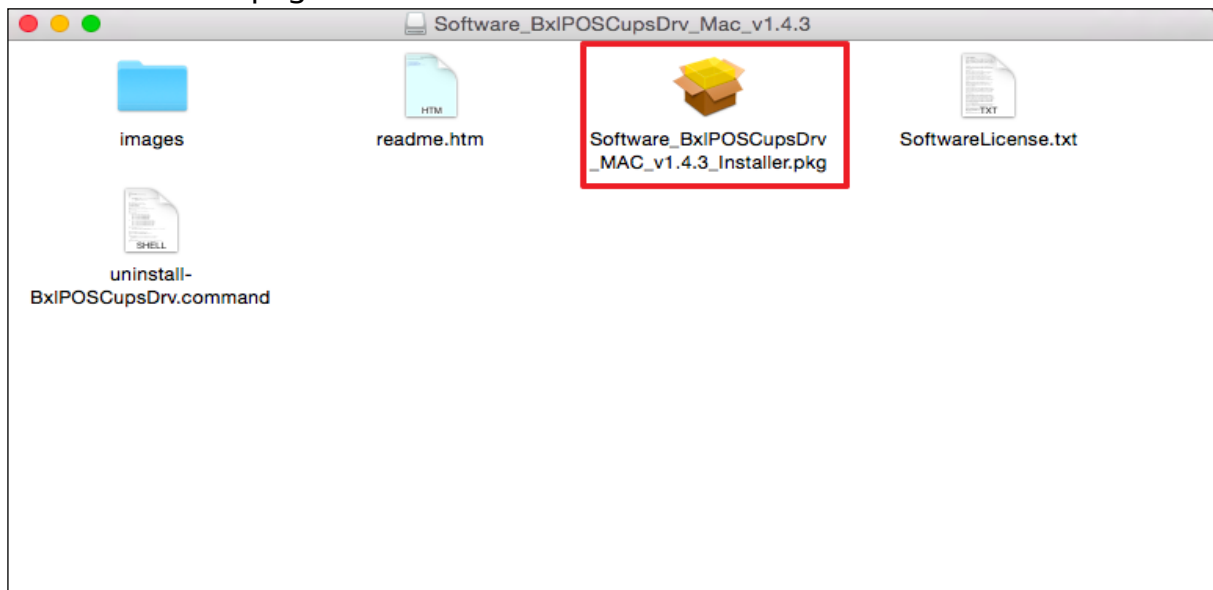
Some semiconductor devices are easily damaged by static electricity. You should turn the printer "OFF", before you connect or remove the cables on the rear side, in order to guard the printer against the static electricity. If the printer is damaged by the static electricity, you should turn the printer "OFF".

1. Installation Guide

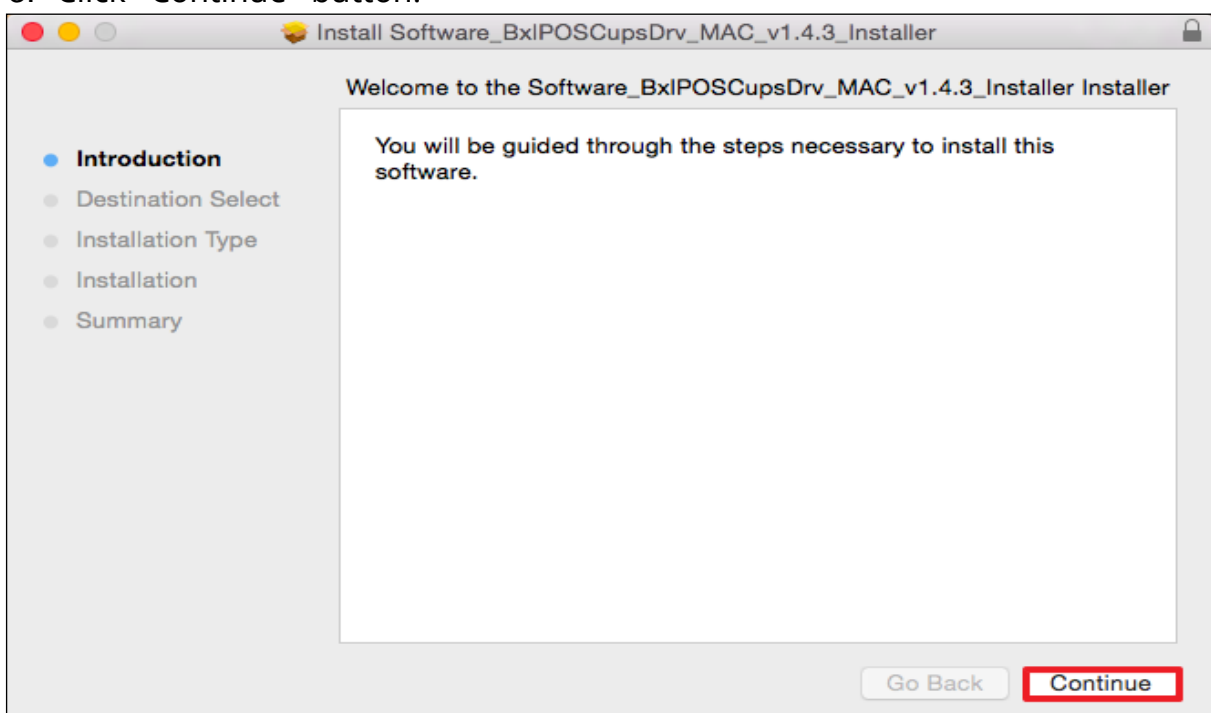
1. Open "Finder" and move to "Downloads" folder and double click driver .dmg file.



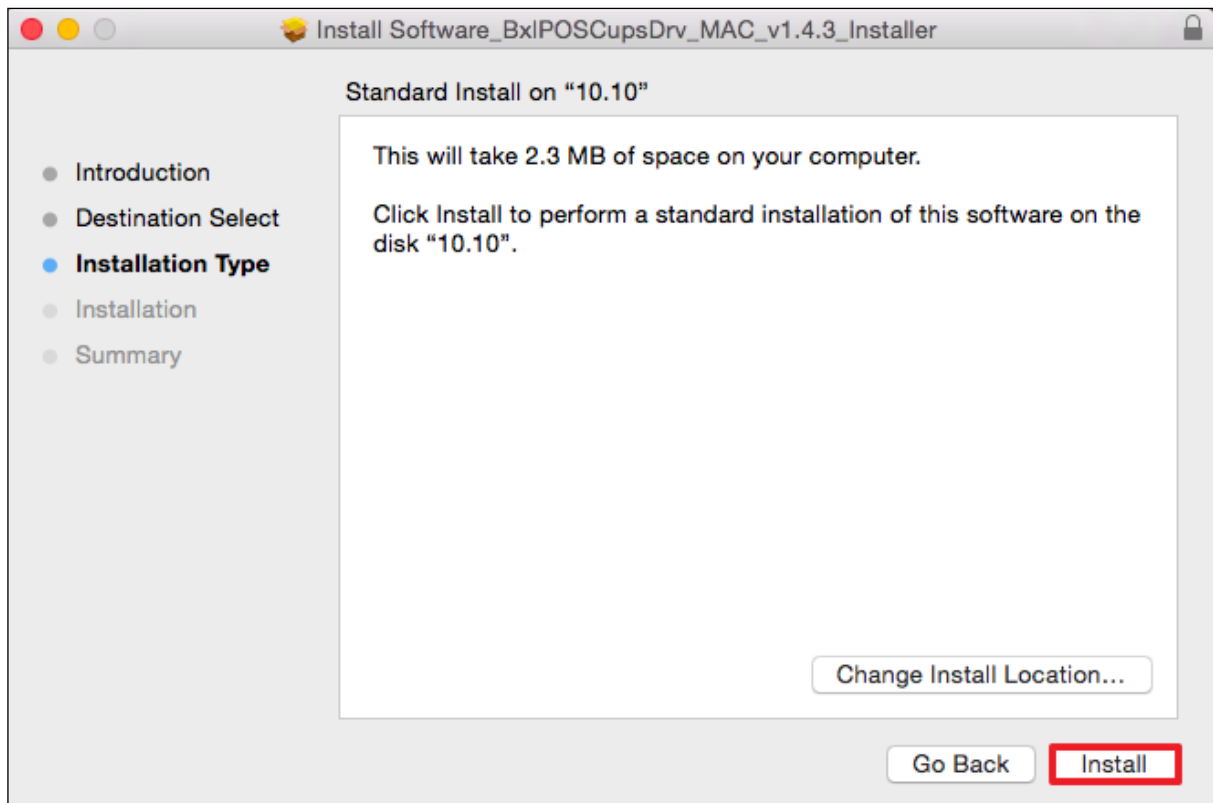
2. Double click .pkg file



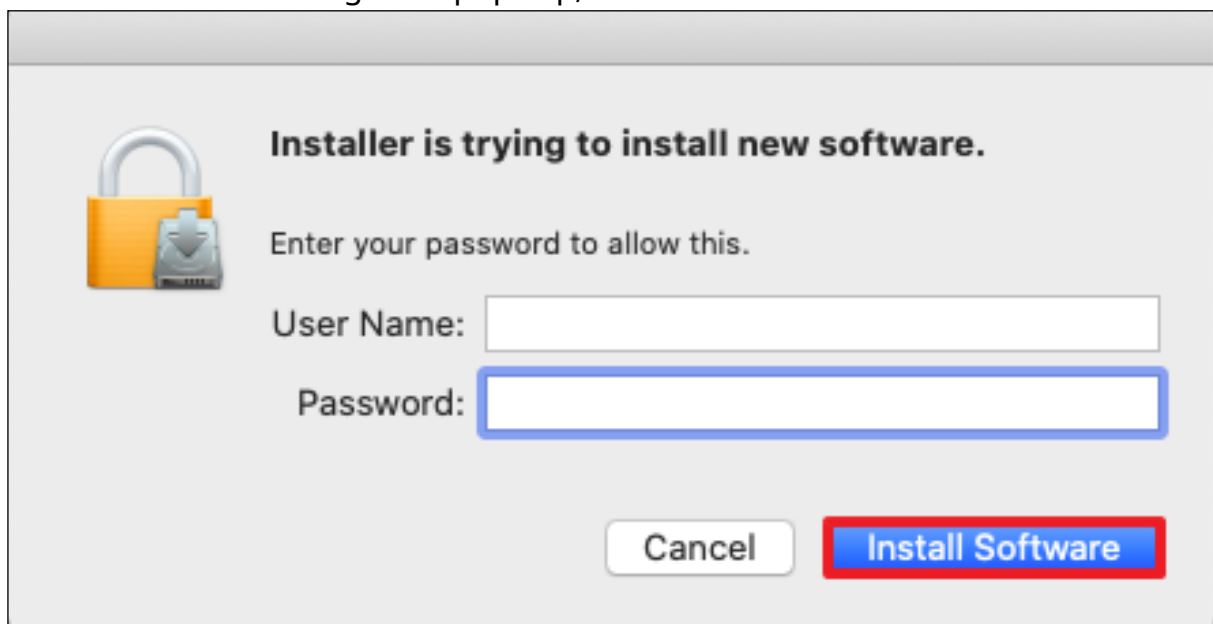
3. Click "Continue" button.



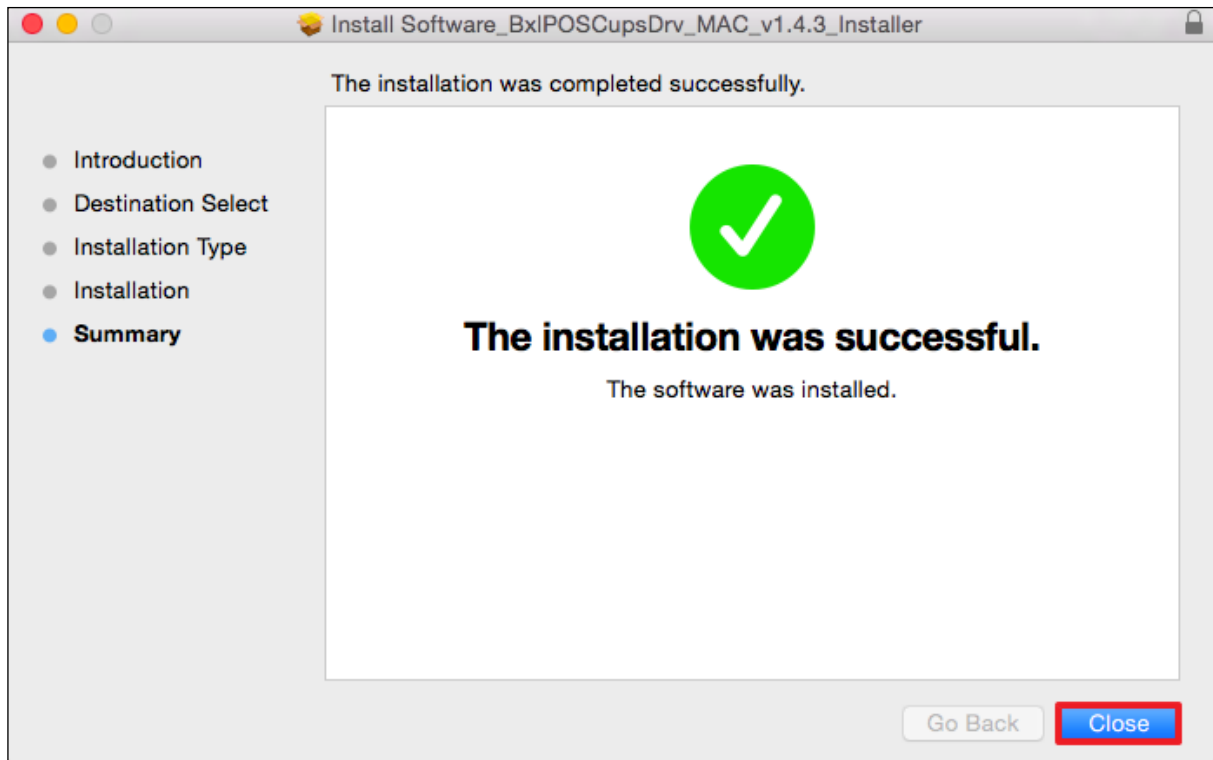
4. Click "Install" Button



5. When below message box pops up, enter the "User Name" and "Password".



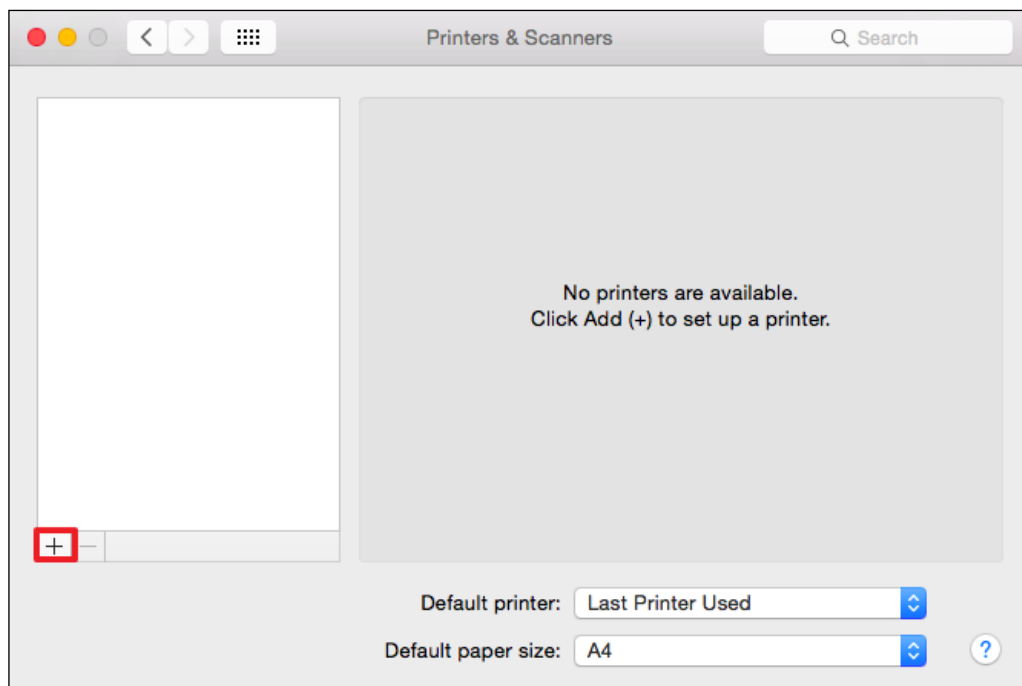
6. After driver installation, “The installation was successful” message will be showed as below.



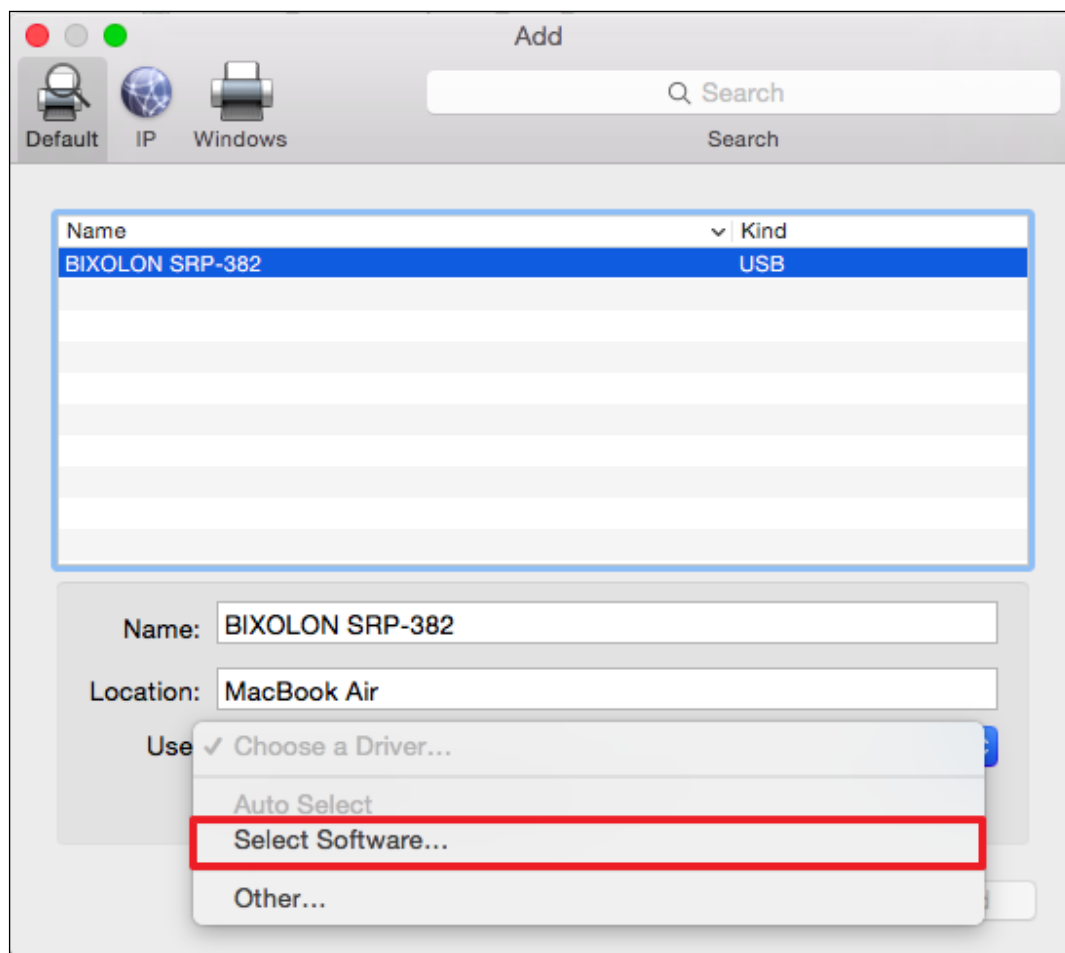
7. Once the driver package has been installed, open “System Preferences” and click “Printers & Scanners”.



8. Click “+” button and select Auto-detected USB Printer.

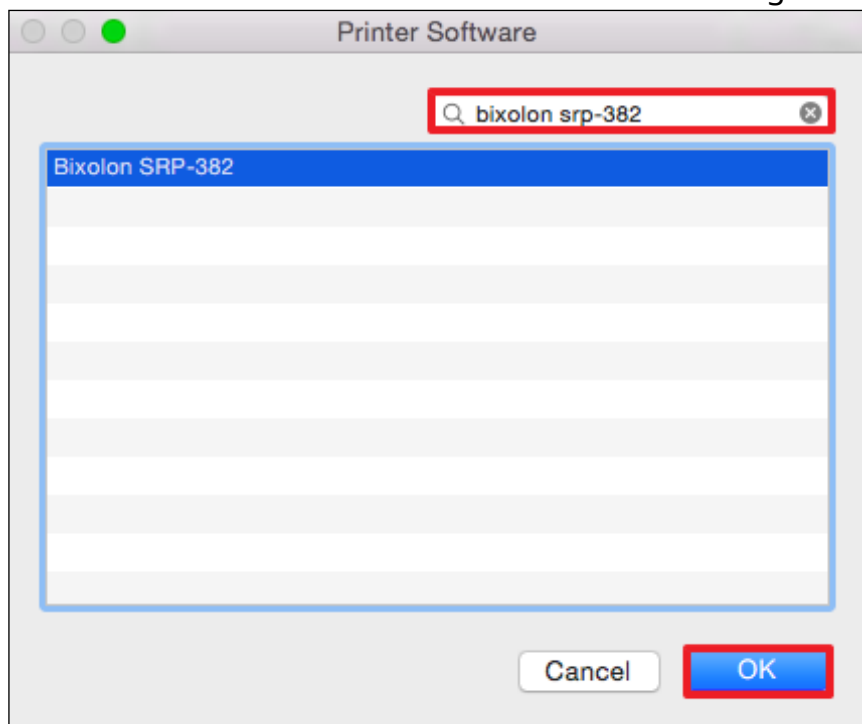


9. Click “Select Software...” in “Use” section.

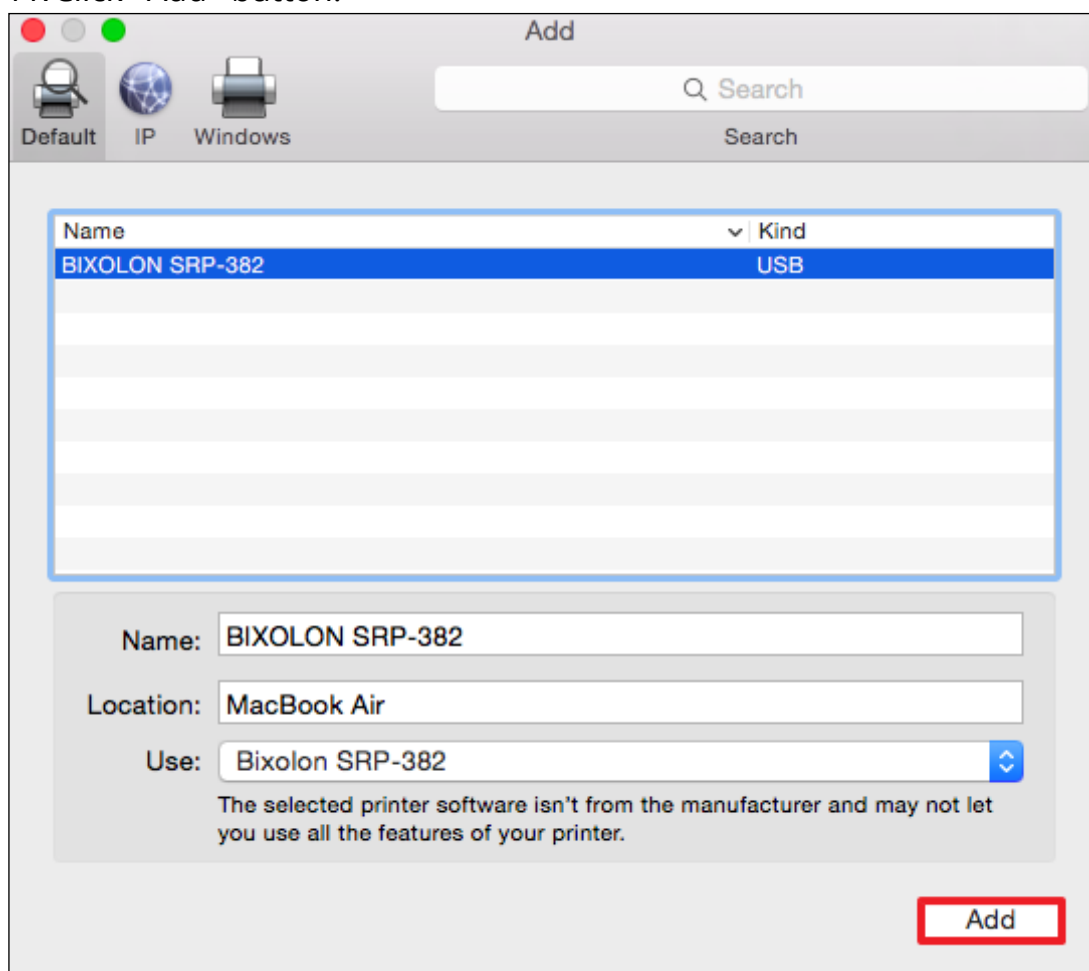


In case of Ethernet or WLAN connection, please refer to CUPS Ethernet Setting manual.

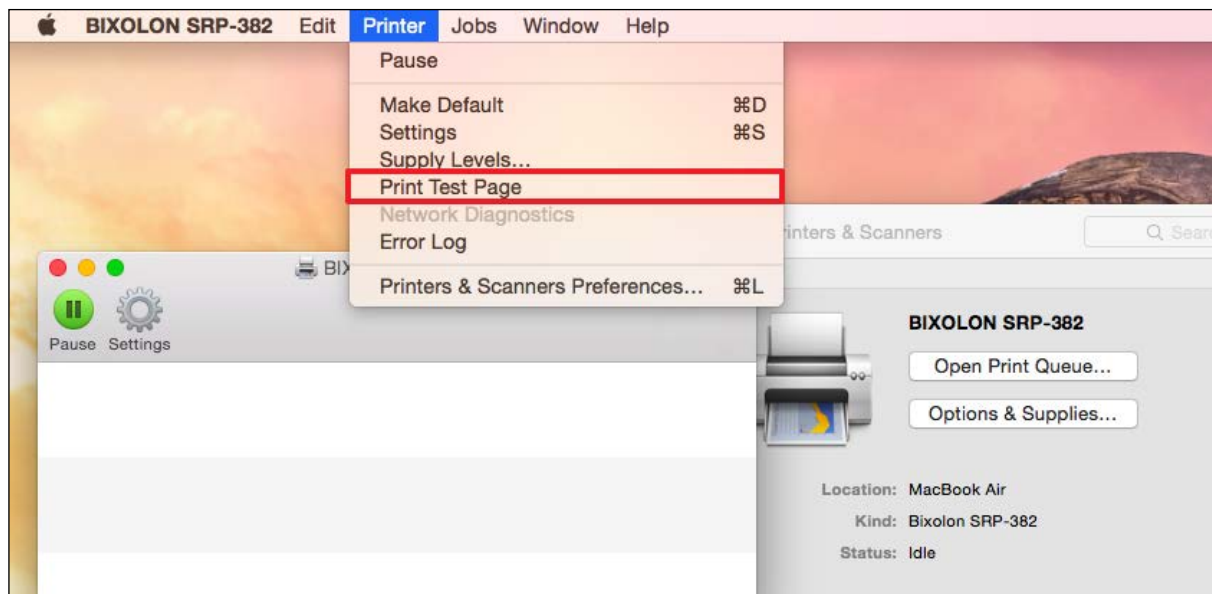
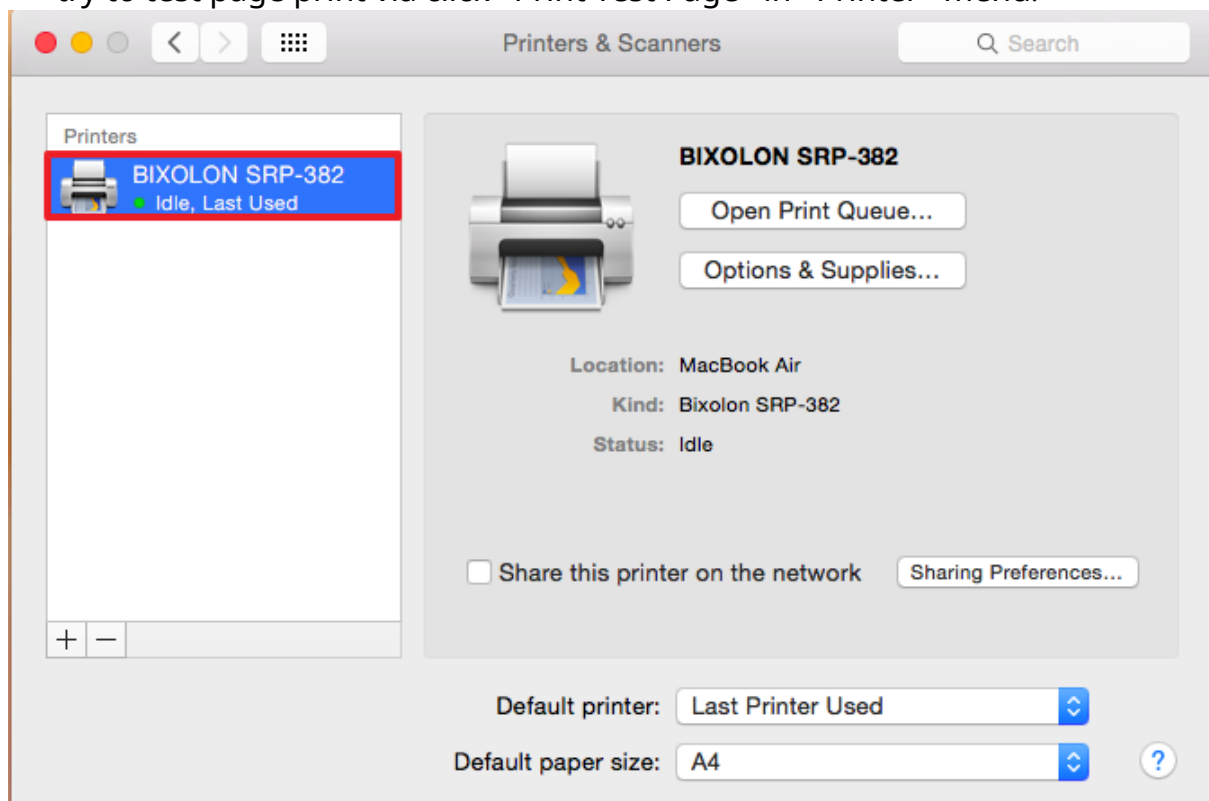
10. Select the driver. You can search the driver using search section.



11. Click "Add" button.

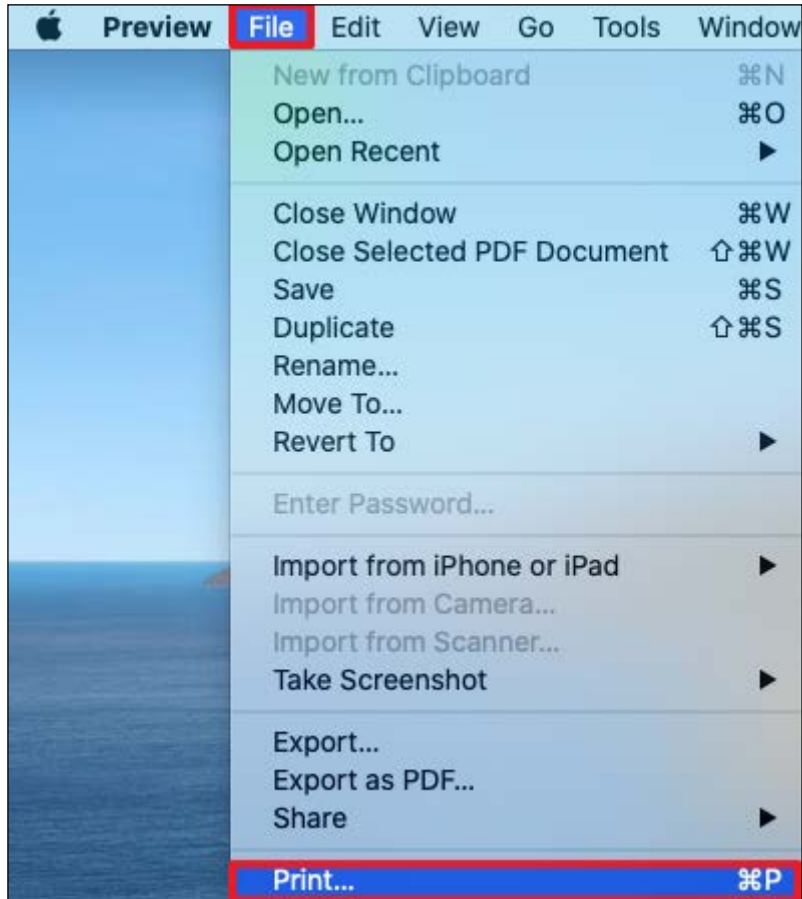


12. Once the printer is added, open printer queue via double click printer icon, try to test page print via click "Print Test Page" in "Printer" menu.

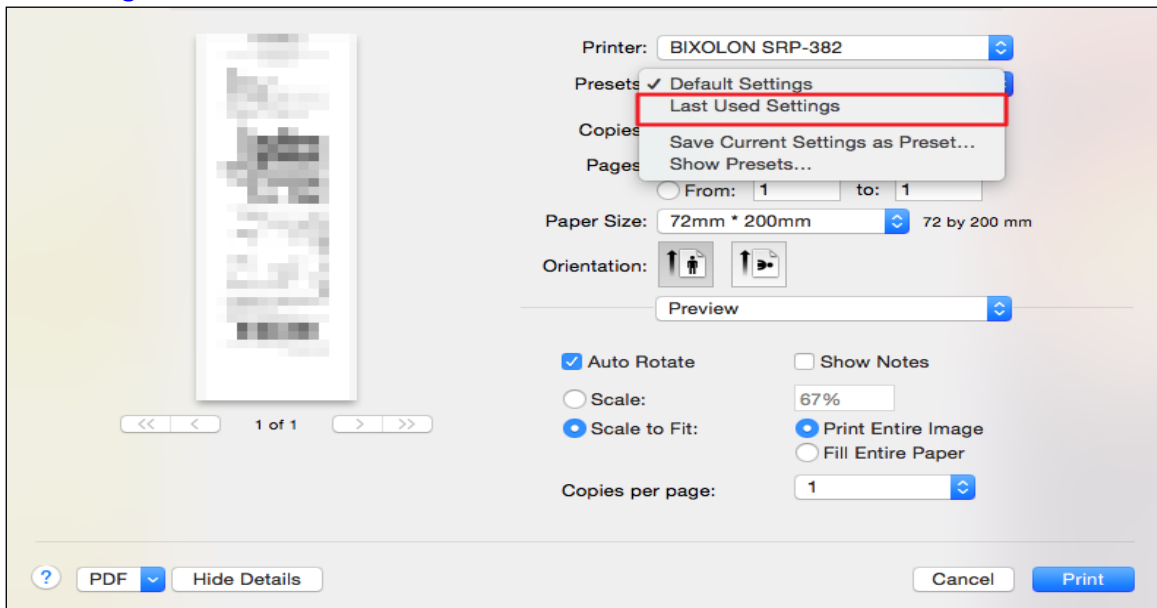


2. Print Options Setting Guide

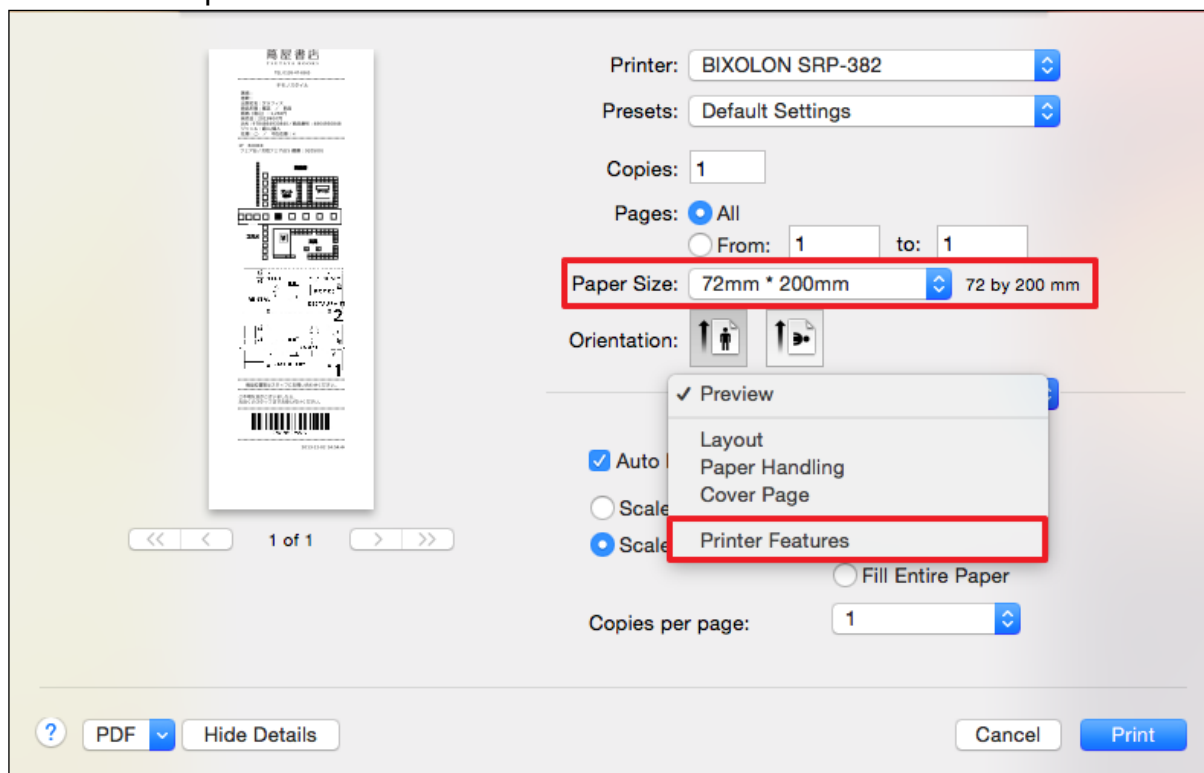
1. Start an application.
2. Select "Print..." in "File" menu.



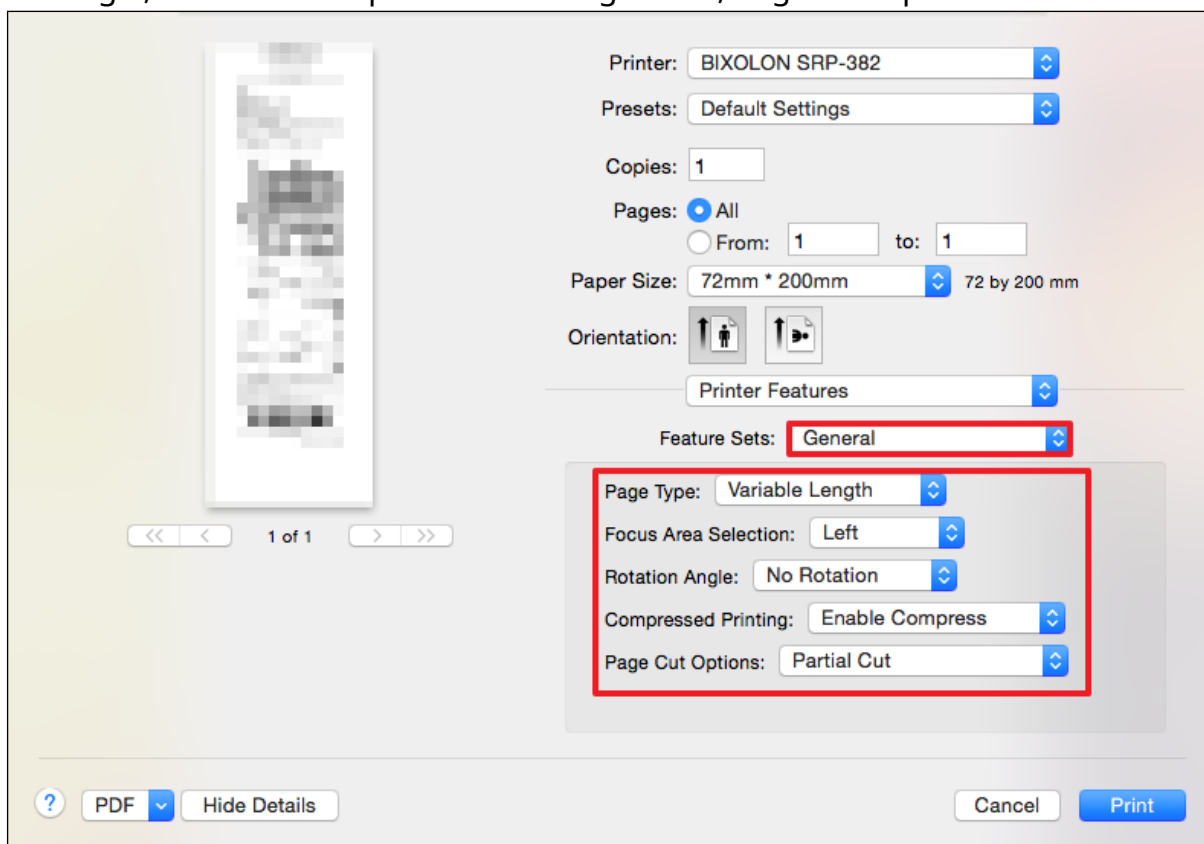
3. If you want save print setting, Select presets to “Last Used Settings”. If not, keep “Default Settings”.
- * If you want change Default Settings, please refer to [Default Print Options Setting Guide](#) in this manual.



4. Select "Paper Size" and Select "Printer Features" in "Preview"



5. In General feature set, you can set Page Type, Focus Area Selection, Rotation Angle, Whether Compressed Printing or not, Page Cut Options.



6. In Logo Options feature set, you can set Logo Position, Logo Alignment, LogoImage Number, Logo Size, Line Feed amount that after logo print.

The screenshot displays the MAC CUPS Driver interface. On the left, there is a preview of a receipt with a logo. Below the preview are navigation buttons: <<, <, 1 of 1, >, >>. The right side of the interface contains various settings:

- Printer: BIXOLON SRP-382
- Presets: Default Settings
- Copies: 1
- Pages: ☒ All, ☐ From: 1 to: 1
- Paper Size: 72mm * 200mm (72 by 200 mm)
- Orientation: ☒ Portrait, ☐ Landscape
- Printer Features: [Dropdown]
- Feature Sets: **Logo Options** (highlighted with a red box)

The 'Logo Options' feature set is expanded, showing the following settings (all highlighted with a red box):

1. Logo Position : No Logo
2. Alignment : Left
3. Logolmage Number: First Logo(00)
4. Logo Size : Normal
5. LineFeed : 1 Line Feed

At the bottom, there are buttons for '?', 'PDF', 'Hide Details', 'Cancel', and 'Print'.

7. In Cash Drawer Control feature set, you can set Cash Drawer, Cash Drawer Open, Cash Drawer 1 Pulse Width, Cash Drawer 2 Pulse Width.

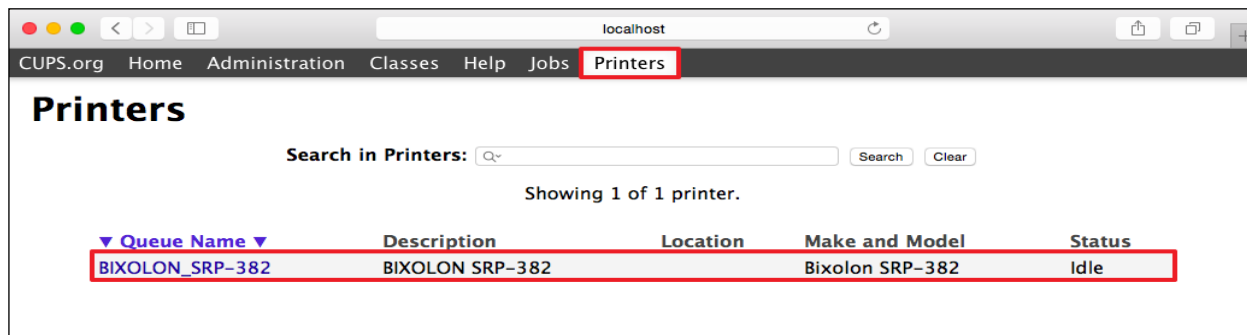
The screenshot displays the MAC CUPS Driver interface, similar to the previous one. The 'Feature Sets' dropdown is set to **Cash Drawer Control** (highlighted with a red box). The 'Cash Drawer Control' feature set is expanded, showing the following settings (all highlighted with a red box):

1. Cash Drawer: Do Not Open Drawers
2. Cash Drawer Open: After Printing
3. Cash Drawer 1 Pulse Width: 200 millise...
4. Cash Drawer 2 Pulse Width: 200 millise...

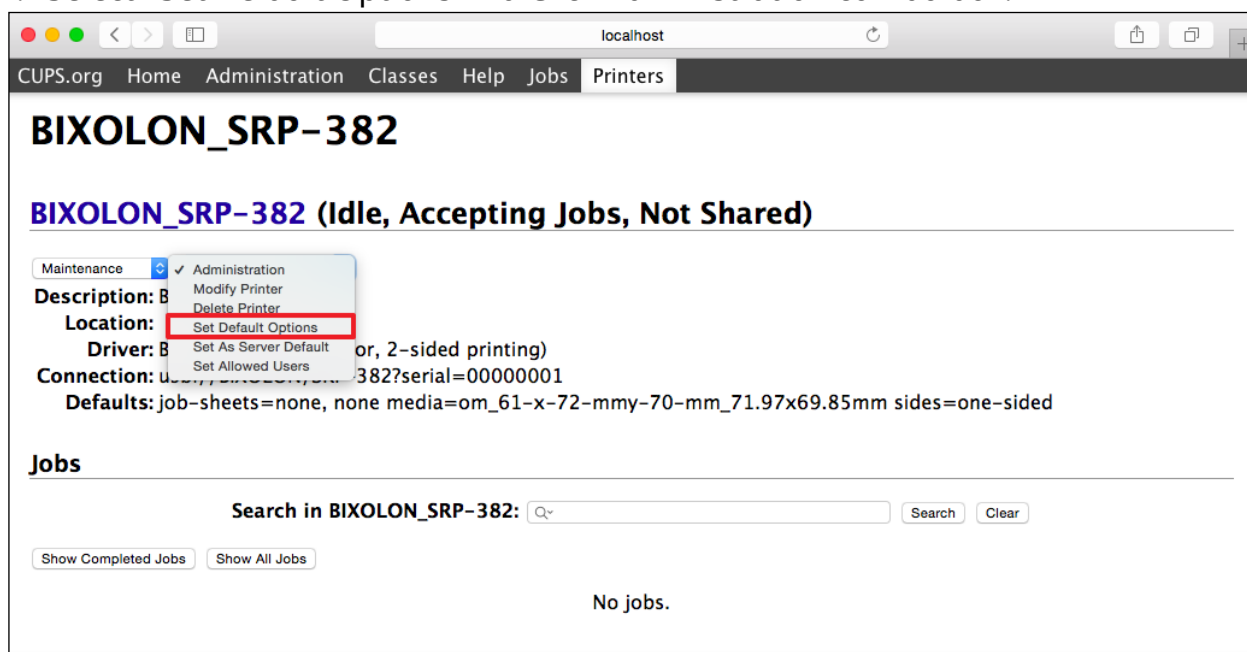
The rest of the interface, including the receipt preview, navigation buttons, and other settings, remains the same as in the previous screenshot.

3. Default Print Options Setting Guide

1. Access "localhost:631" or "127.0.0.1:631" Website and select printer in Printers tab.



2. Select "Set Default Options" via Click Administration combo box.



3. In general tab, you can set Media Size, Sensor Type, Rotation Angle, and number of copy via change each combo box.

CUPS.org Home Administration Classes Help Jobs Printers

Set Printer Options

Set Default Options for BIXOLON_SRP-382

General Logo Options Cash Drawer Control Banners Policies

General

Media Size: 72mm * 70mm

Page Type: Variable Length

Focus Area Selection: Left

Rotation Angle: No Rotation

Compressed Printing: ☐ Disable Compress ☒ Enable Compress

Page Cut Options: Partial Cut

Set Default Options

4. In Logo Options, you can set Logo Position, Logo Alignment, LogoImage Number, Logo Size, LineFeed amount that after logo printing.

CUPS.org Home Administration Classes Help Jobs Printers

Set Printer Options

Set Default Options for BIXOLON_SRP-382

General **Logo Options** Cash Drawer Control Banners Policies

Logo Options

1. Logo Position : No Logo

2. Alignment : Left

3. LogoImage Number: First Logo(00)

4. Logo Size : Normal

5. LineFeed : 1 Line Feed

Set Default Options

5. In Cash Drawer Control, you can set Cash Drawer, Cash Drawer Open, Cash Drawer 1 Pulse Width, Cash Drawer 2 Pulse Width via change each combo box.

CUPS.org Home Administration Classes Help Jobs Printers

Set Printer Options

Set Default Options for BIXOLON_SRP-382

[General](#) [Logo Options](#) **[Cash Drawer Control](#)** [Banners](#) [Policies](#)

Cash Drawer Control

1. Cash Drawer: Do Not Open Drawers

2. Cash Drawer Open: After Printing

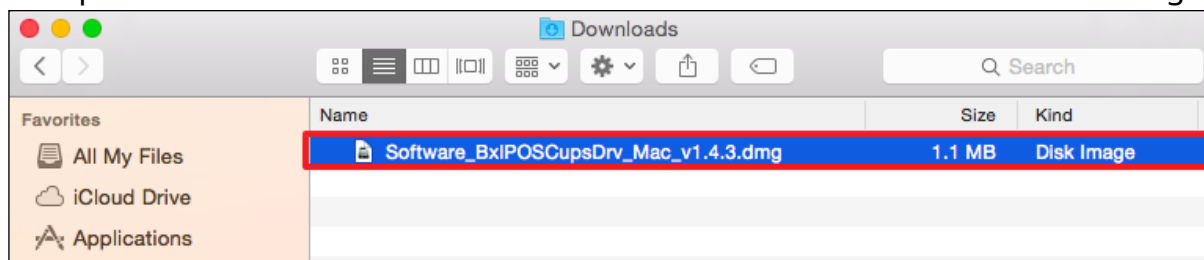
3. Cash Drawer 1 Pulse Width: 200 milliseconds

4. Cash Drawer 2 Pulse Width: 200 milliseconds

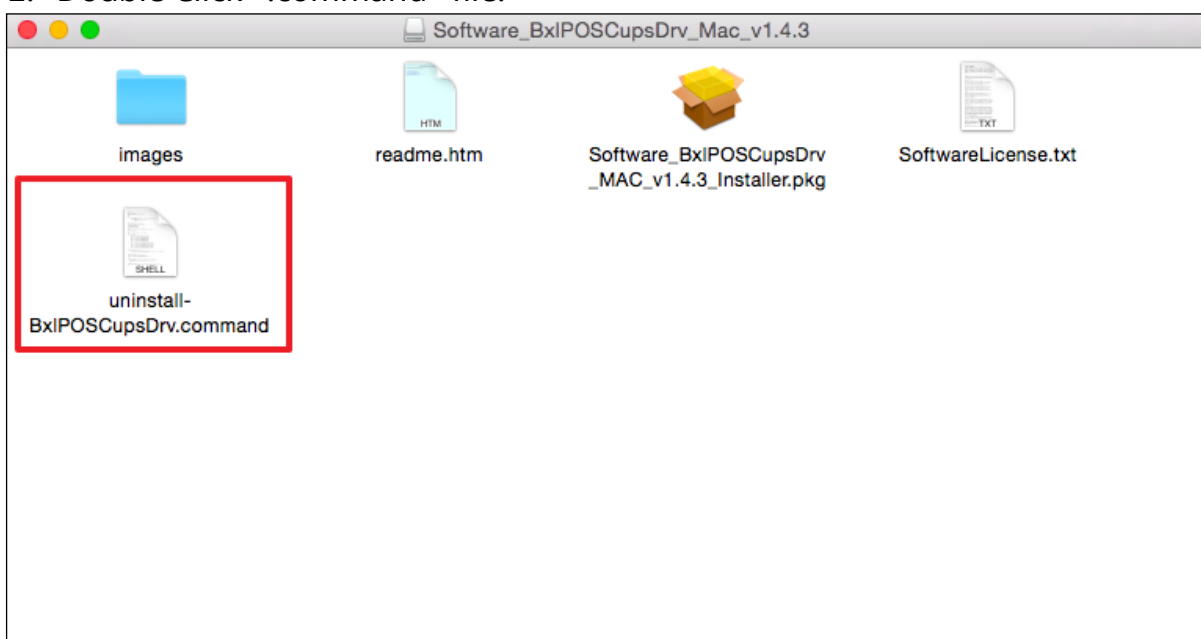
[Set Default Options](#)

4. Uninstallation Guide

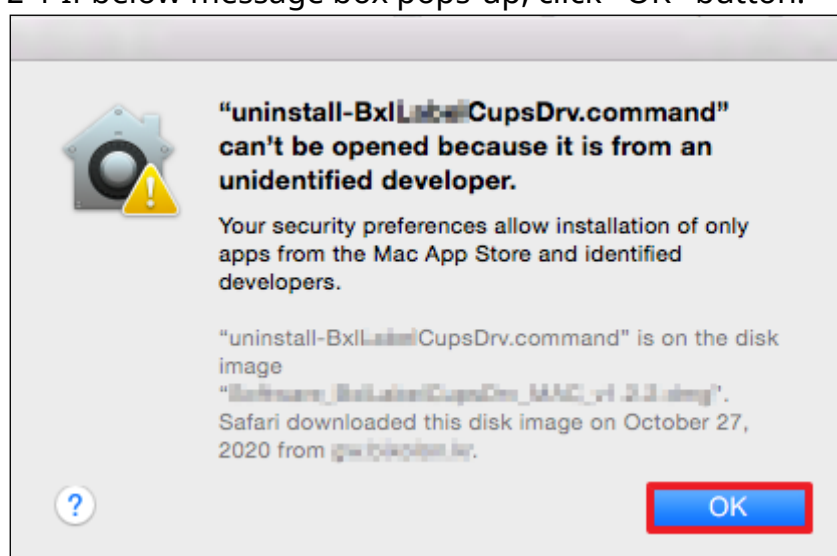
1. Open "Finder" and move to "Downloads" folder and double click driver dmg file.



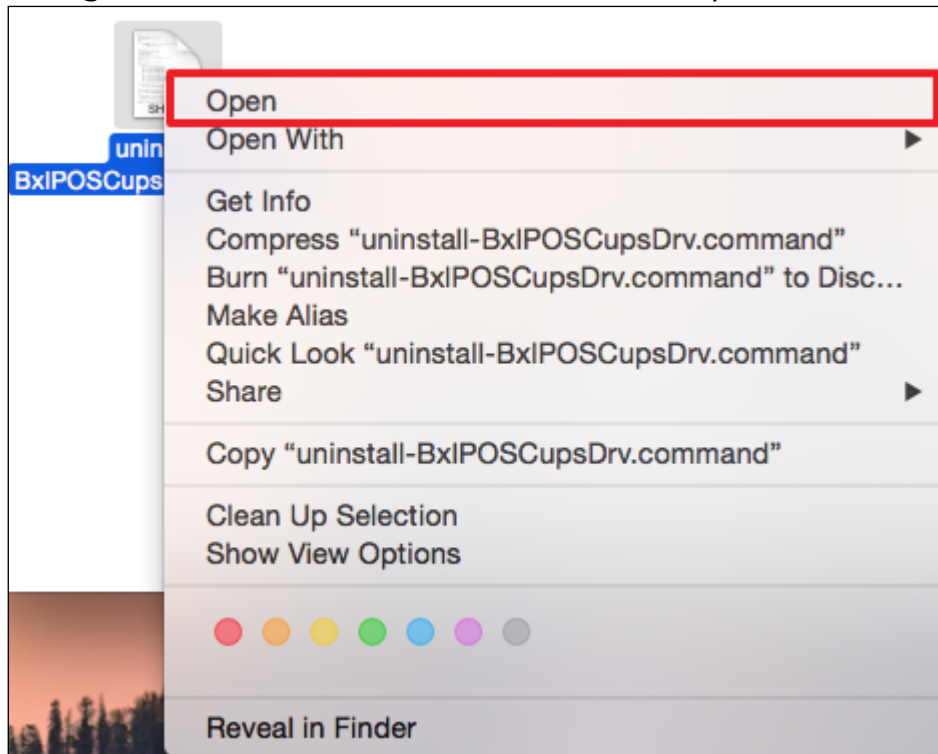
2. Double Click “.command” file.



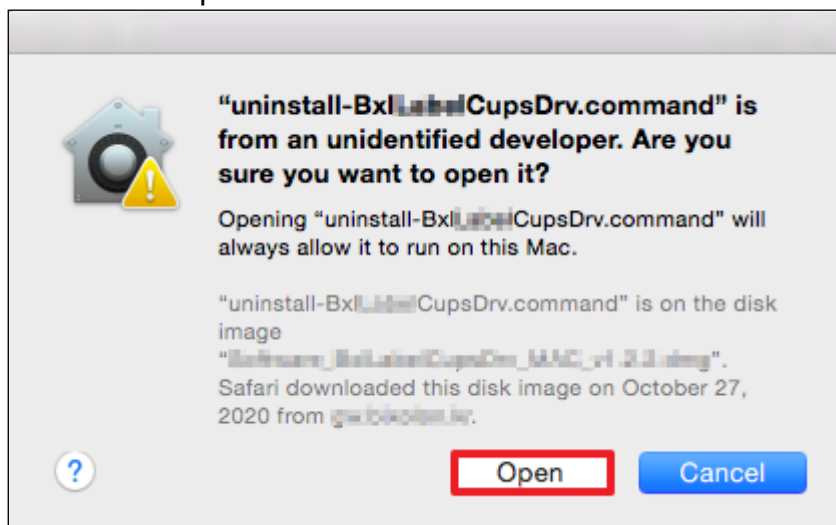
- 2-1 If below message box pops-up, click "OK" button.



2-2 Right Click the “.command” file and click “Open”



2-3 Click “Open” button.



3. Enter Administrator password.

While enter your password, nothing will appear on the screen.

```
bixon — uninstall-BxlPOSCupsDrv.command — sudo — 80x24
Last login: Fri Oct 30 10:43:55 on ttys000
/Volumes/Software_BxlPOSCupsDrv_Mac_v1.4.3/uninstall-BxlPOSCupsDrv.command ; exit;
bixon-MacBook-Air:~ bixon$ /Volumes/Software_BxlPOSCupsDrv_Mac_v1.4.3/uninstall-BxlPOSCupsDrv.command ; exit;
Bixon CO Ltd
BIXOLON PRINTER MAC DRIVER Uninstaller
-----

Please enter administrator's password.
While enter your password, nothing will appear on the screen.
Password:
```

4. After the driver uninstallation complete, uninstall result will be shown as below.

```
bixon — uninstall-BxlPOSCupsDrv.command — 80x24
/usr/share/cups/model/Bixon/SRP383_v1.0.0.ppd
/usr/share/cups/model/Bixon/SRPF310II_v1.0.2.ppd
/usr/share/cups/model/Bixon/SRPF310_v1.0.4.ppd
/usr/share/cups/model/Bixon/SRPF312II_v1.0.2.ppd
/usr/share/cups/model/Bixon/SRPF312_v1.0.4.ppd
/usr/share/cups/model/Bixon/SRPF313II_v1.0.2.ppd
/usr/share/cups/model/Bixon/STP103III_v1.0.5.ppd
/usr/share/cups/model/Bixon/SMB690_v1.0.0.ppd
/usr/share/cups/model/Bixon/BK32_v1.0.0.ppd
/usr/share/cups/model/Bixon/BK33_v1.0.1.ppd

Removing Pkg...
Forgot package 'com.bixon.pkg.POS.Mobile.CUPS.Driver' on '/'.

Restarting CUPS

Uninstall Complete
Delete printer queue using OS tool, http://localhost:631, or http://127.0.0.1:631
1

logout

[Process completed]
```

Revision history

[illegible]